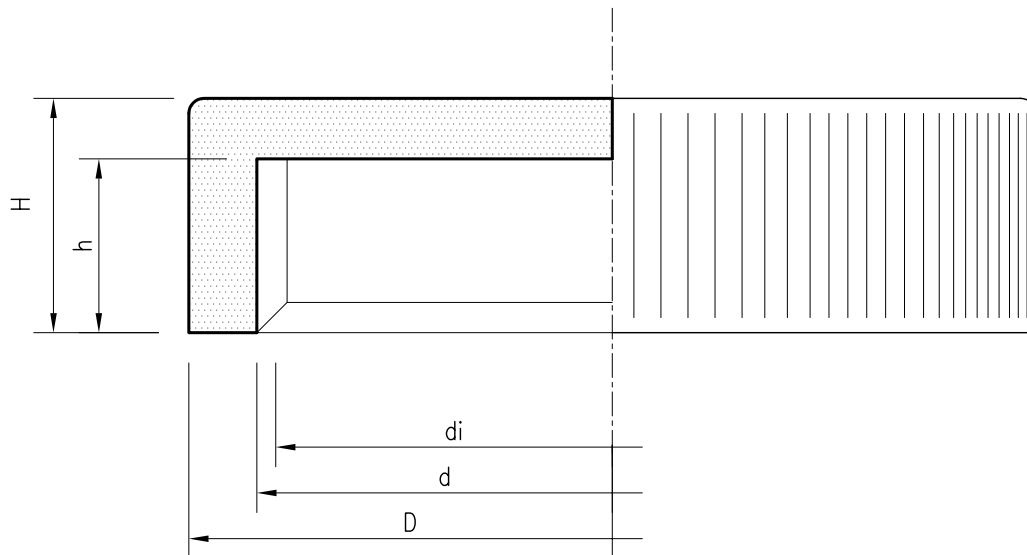


# ALCE s.a.s.

di Cavazzini Fulvio Norberto & C.

## STAMPAGGIO MATERIE PLASTICHE

### COPERCHI



TIPO	D	d	di	H	h	TIPO	D	d	di	H	h
13	40.50	36.40	34.50	15	13.90	58	58	56	55	12.5	11.2
36	36.5	33	31	12.5	11	60	61.6	60.1	58	13.1	11.6
38	42	38.70	37.30	12	11	61	62	59.50	57.20	14.50	12.80
39	42	39.50	37.80	12	10	64	67.6	65.2	63	15.1	23.5
40	42	39.80	38	12.20	10.30	68/A	69.7	67.1	65.5	11.3	10
42	39	36.20	34.50	13	11.70	76	77.8	75.5	73.2	16	14.6
47	46.20	44.20	42.30	12.40	10.70	81	80	83	78	13	15
49	51.7	49.5	48.5	11.50	9.70	84	82.8	79.8	77.1	15.1	13.4
50	49.20	47.20	45.50	11.60	11	84B	84	79.8	77.1	19	13.6
51	50	48.30	46.40	12.40	11.30	98	99	96	93.3	16.5	15
52	55	52.5	51	19	18	98B	100	98.6	94	22.30	17.30
53	54.40	52.20	54.50	12.50	10.60	99	103.5	101.2	97.8	17.20	15.30
54	54.30	51.50	49.90	11.20	9.80	106	111.5	105	103.2	20.6	18.5
55	57	53.80	52.50	11.80	10.20	110	113	108	105.5	16	19

Denominazione COPERCHI  
Materiale POLIPROPILENE  
Tolleranze  $\pm 0.10$  mm  
Disegnatore F.C.