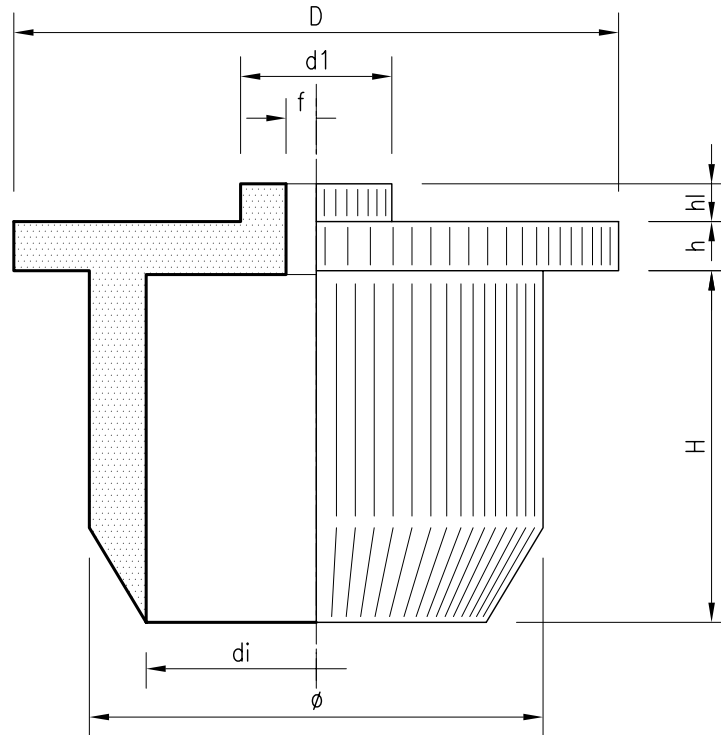


# ALCE s.a.s.

di Cavazzini Fulvio Norberto & C.

**STAMPAGGIO MATERIE PLASTICHE**

## RIDUTTORI (SPRUZZATORI)



$\phi$ nominale	$\phi$	D	$d_i$	$d_1$	f	H	h	$h_1$	PESO (g)
8.5	8.5	10.6	7	=	1.5	7	0.8	=	
10	9.55	10.7	6.8	7	1÷3	7.6	0.9	0.9	0.32
11	11	14	9.5	=	1÷5	8.5	1.5	=	0.40
12	12	14.5	9.5	=	2	7	1	=	0.50
13	13	15.5	10.6	5.9	1.5	7.2	1.8	1.4	0.58
13.5	13.3	16.2	10.7	5	1.2	12.5	1.35	0.3	0.78
14	14	16	12.5	8	2	12	2	1	0.85
14.5	14.6	16.6	13.5	4.5	2	12.5	1.2	0.5	0.80
15.5	15.7	17.7	14.5	5.5	1.5	10	1	0.8	0.90
16	16	17.8	13.1	5	1.2	13.5	1.30	1	1.03
17	17	19	12.8	=	1÷6	12.2	1.1	=	1.06
17.8	17.8	19.8	14.9	7	1.8	12.2	2.2	0.3	1.09
19.5	19.5	22	18	=	1.5	12	1	=	1.10
22	21.9	23.7	18.9	=	1.9	13.4	1.3	=	1.25

Denominazione RIDUTTORI (SPRUZZATORI)

Materiale POLIETILENE LD

Tolleranze  $\pm 0.10$  mm

Disegnatore F.C.